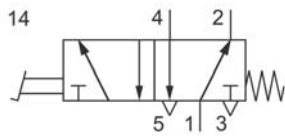
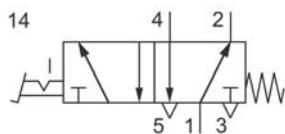


Technical data for series

F



FFH-07-511, FF-07-511



FRH-07-520, FR-07-520



Design and function

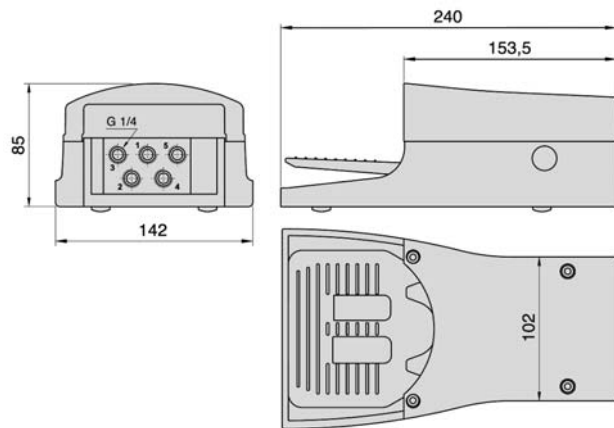
The valve can be used as a 3/2 or 2/2-way function by closing plugging the appropriate ports.
 Types FFH-07-511 and FRH-07-520: The pedals are protected by a cover.

Order number	FF-07-511	FFH-07-511	FR-07-520	FRH-07-520
Function	5/2-way valve with spring return		5/2-way valve with mechanical detent	
Connection	G 1/4			
Nominal size	7.5 mm			
Flow rate	680 l/min (0.69 Cv)			
Pressure range	2 ... 10 bar (29 ... 145 psi)			
Temperature range	– 10 °C ... + 60 °C (14 °F ... 140 °F)			
Materials	Body: Al (anodized) and POM, Seals: NBR			
Weight	1 kg (2.205 lbs.)			

Dimensions for series

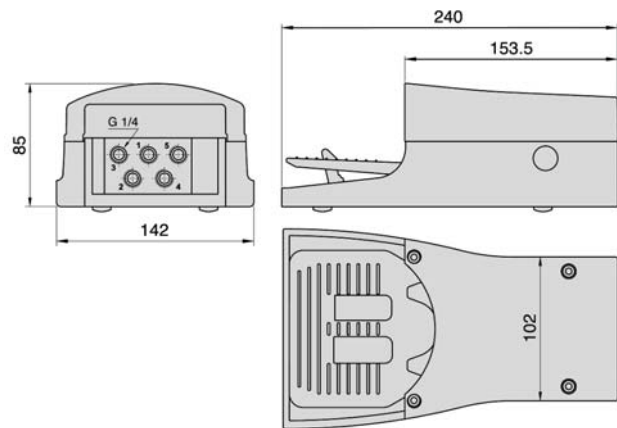
F

FF-07

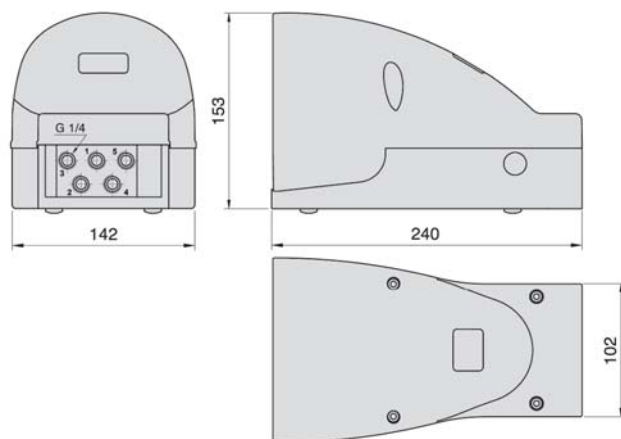


- 1 = pressure inlet
- 2 = outlet
- 3 = exhaust
- 4 = outlet
- 5 = exhaust

FR-07



FFH-07



- 1 = pressure inlet
- 2 = outlet
- 3 = exhaust
- 4 = outlet
- 5 = exhaust

FRH-07

